

Electronic ventilation duct temperature sensor For ventilation and air-conditioning Model A2G-60

WIKA data sheet TE 62.90



for further approvals
see page 4



Applications

- For measuring the temperature of gaseous media in ventilation and air-conditioning systems
- Designed for connection to control and display systems

Special features

- Simple mounting, including mounting flange
- Compact and robust design
- Direct mounting on circular ventilation pipes or rectangular ventilation ducts
- Pt1000 or Ni1000 sensor
- Also available with electrical output signal (0 ... 10 V or 4 ... 20 mA)



Electronic ventilation duct temperature sensor,
model A2G-60

Description

The model A2G-60 electronic ventilation duct temperature sensor is used for temperature measurement in heating, ventilation, air-conditioning and refrigeration systems and is primarily used in air ducts.

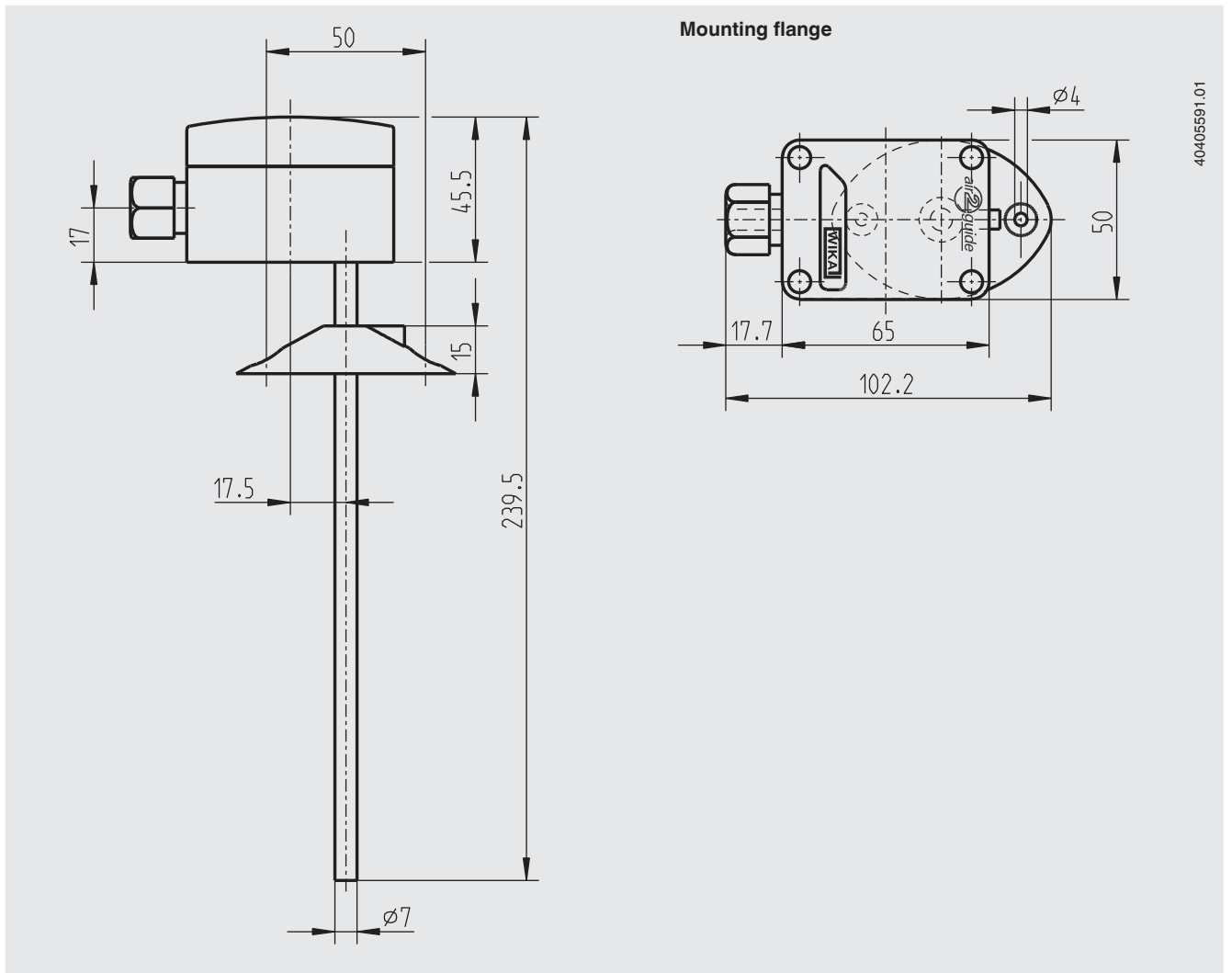
Mounting is performed using a mounting flange. In conjunction with an additional thermowell, the A2G-60 can also be used for temperature measurement in liquid media.

By selecting the appropriate measuring elements, the ventilation duct temperature sensor is compatible with all commonly used control systems. The A2G-60 is available with Pt1000 or Ni1000 sensor but also with an integrated transmitter (0 ... 10 V or 4 ... 20 mA).

Specifications

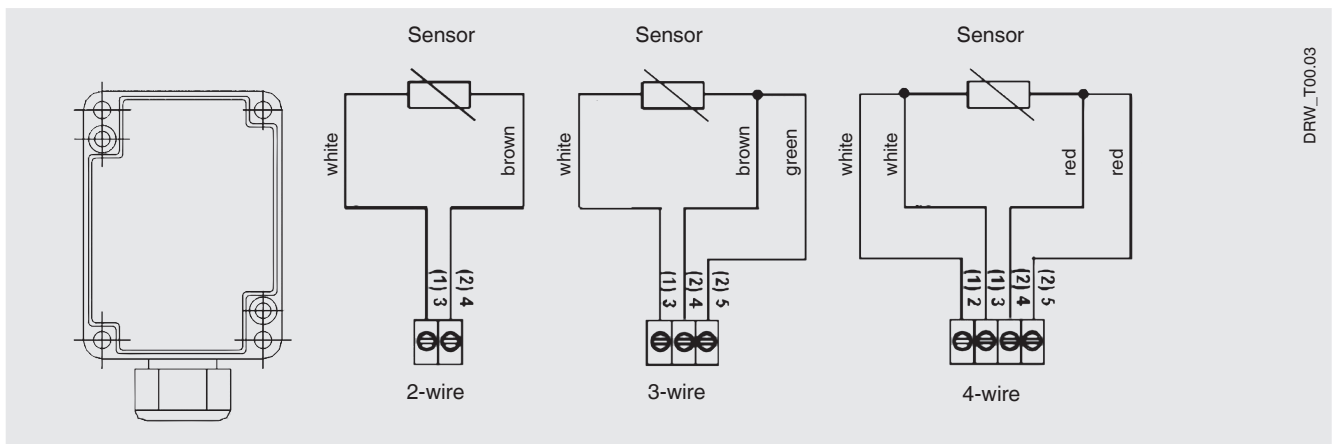
Electronic ventilation duct temperature sensor, model A2G-60	
Measuring element	<ul style="list-style-type: none"> ■ Temperature probe passive (Pt1000, A DIN and Ni1000) ■ Transmitter active (TRV/TRA)
Measuring range	
<ul style="list-style-type: none"> ■ Temperature probe passive (Pt1000, 1/3 DIN and Ni1000) <ul style="list-style-type: none"> - Standard - High-temperature version ■ Transmitter active (TRV/TRA) <ul style="list-style-type: none"> - Standard - Jumper 	-50 ... +160 °C -50 ... +260 °C 0 ... 50 °C -50 ... +50 °C -15 ... +35 °C -10 ... +120 °C
Accuracy	±1 % of measuring range
Power consumption	0.35 W / 0.82 VA
Transmitter output	TRV 0 ... 10 V, min. load 5 kΩ, connection terminal, 3-pin (3-wire) TRA: 4 ... 20 mA (2-wire)
Probe sleeve	Stainless steel 1.4571
Insertion length L	192 mm, Ø 7 mm Option: L = 62, 135, 240, 320, 392, 465 mm
Mounting flange	Material PA6.6, colour black Max. +130 °C
Electrical connection	Cable gland M16
Permissible temperatures	
<ul style="list-style-type: none"> ■ Head temperatures <ul style="list-style-type: none"> - Temperature probe passive (Pt1000, 1/3 DIN and Ni1000) - Transmitter active (TRV/TRA) ■ Probe sleeve 	-35 ... +90 °C -35 ... +70 °C -50 ... +160 °C
Ingress protection	IP65
Weight	150 g

Dimensions in mm



4040559.1.01

Electrical connection (sensor Pt1000/Ni1000)



DRW_T00.03

Approvals

Logo	Description	Country
	EU declaration of conformity <ul style="list-style-type: none">■ EMC directive■ RoHS conformity■ WEEE directive	European Union
	EAC (option) Import certificate	Eurasian Economic Community
	KazInMetr (option) Metrology, measurement technology	Kazakhstan
-	MTSCHS (option) Permission for commissioning	Kazakhstan
	UkrSEPRO (option) Metrology, measurement technology	Ukraine
	Uzstandard (option) Metrology, measurement technology	Uzbekistan

Certificates (option)

- 2.2 test report
- 3.1 inspection certificate

Approvals and certificates, see website

Scope of delivery

- Electronic ventilation duct temperature sensor
- Mounting flange

Ordering information

Model / Measuring element / Insertion length L / Approvals / Certificates / Options

© 08/2008 WIKA Alexander Wiegand SE & Co. KG, all rights reserved.
The specifications given in this document represent the state of engineering at the time of publishing.
We reserve the right to make modifications to the specifications and materials.

